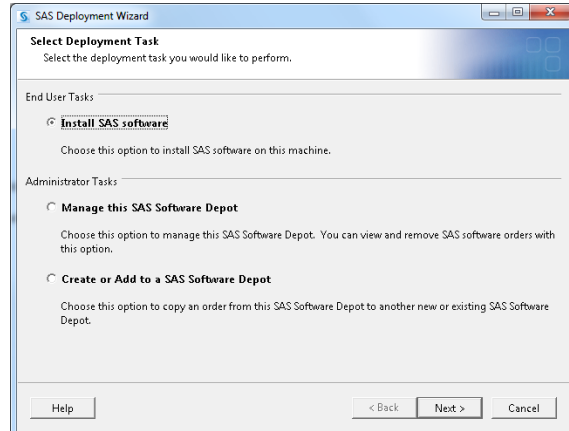
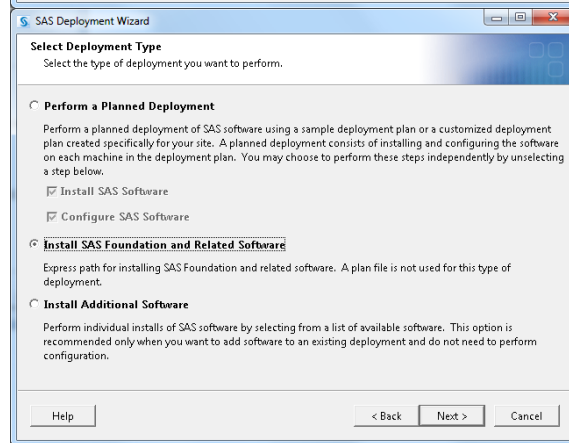


SAS installation instructions on a Windows7 machine, provided by a student in a previous section of CSC423, Rafaella Settimi, instructor)

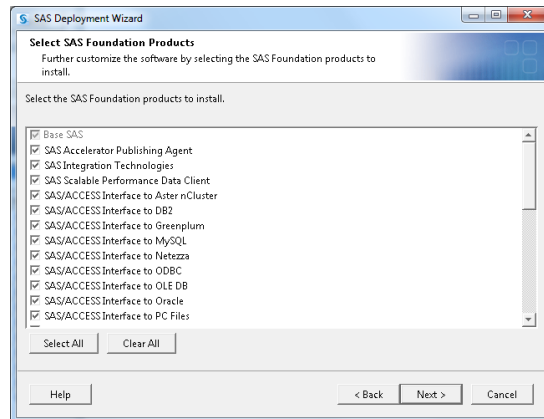
STEP 1: Leave the default, select Next>



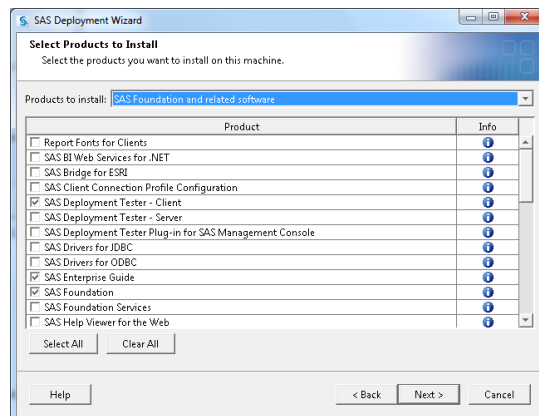
STEP 2: Select the second option “Install SAS Foundation and Related Software”, then select Next>



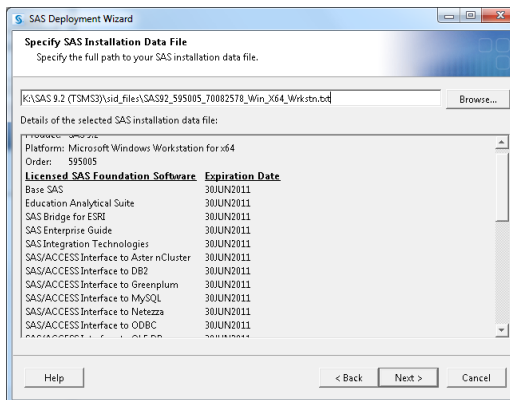
STEP 3: The default values install the SAS foundation and related software. Select Next >.



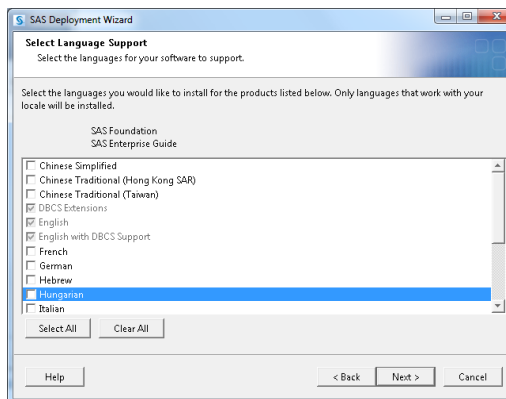
STEP 4: Use default values and select Next.



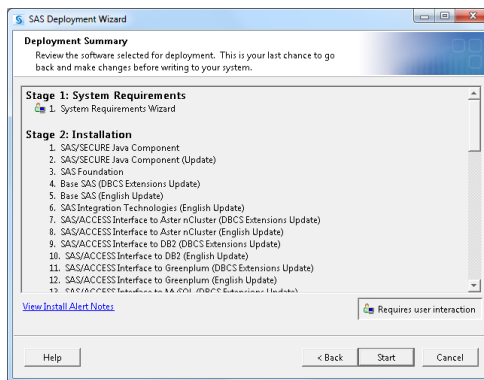
STEP 5: Select Next.



STEP 6: Select Clear All then Next.



STEP 7: Select Start to complete the installation.



Some of the SAS/ACCESS Interfaces may not be needed later. The only harm with installing them is they will take up some disk space. The machine may require a reboot depending on the results of the Systems Requirements Wizard.