

PERFORCE login and setup:

Please keep this email. Here is some needed information, for Perforce server.

Step 1/7: Perforce documentation.

- Read this first - Introducing Perforce
 - <https://www.perforce.com/perforce/doc.current/manuals/p4v/index.html>
- Read and enjoy

Step 2/7: Follow the instructions in Getting Started (very important)

Step 3/7: Download and install Perforce Visual Client P4V for windows

- Download P4V Helix Visual Client
 - <https://www.perforce.com/downloads/helix-visual-client-p4v>
 - Download and install the appropriate version for your OS (32bit or 64bit)
- IP and Port of the server:
 - In the dialog box: ***perforce.dpu.depaul.edu:1666***
 - IP: perforce.dpu.depaul.edu
 - PORT: 1666
- Follow the instructions from Getting Started on how to setup the P4V.
- Your Depot is called ***//berthiaume2025winter_gam370/***

Step 4/7: Custom Cheesy DePaul Videos:

- Links to cheesy video on how to use perforce
 - Initial Setup
 - [Setup Perforce](#)
 - Adding/Deleting and using files in Perforce
 - [Working with Perforce](#)

Step 5/7: Login and passwords:

- Here's a list of everyone's login
 - Campus connect ID is used
 - Your password is your Campus connect password
- Update (fix) your user's data
 - Click <Connection> <Edit Current User>
 - ***Reset your email to the correct one***
 - ***Update your full name***
- User names:

○ aandre27	○ jmaglasa
○ afantoz1	○ kdai
○ akrasno1	○ lwall2
○ arojas25	○ mgoglani
○ aschein1	○ mmccreed
○ aseidle1	○ mriver68
○ awhiteh6	○ ms1
○ azastawn	○ osterlin
○ bcarro11	○ psaloura
○ blamonic	○ psingh34
○ bmeka	○ rraguram
○ bveneabl	○ sgaume
○ ctiemeye	○ sliu75
○ elawing	○ tmorrow5
○ emow1	○ wblair
○ epeter58	○ wmorton1
○ hlee124	○ xzhan153
○ jlimes1	○ ztang13

Step 6/7: Setup

- After logging onto performe and setting up a workspace
- Do the following modifications to make the performe environment work better

Performe(1) - Modify your workspace please

- Edit your workspace, go to the advanced tab
- Especially the revert unchanged files

The screenshot shows the 'Advanced' tab of a workspace settings dialog. The 'Owner' is 'ekeen' and the 'Host' is 'ekeen_mac15'. The 'Description' is 'Created by keen'. The 'Alt roots' field is empty. The 'Restrict to Server ID' checkbox is unchecked. The 'File Options' section has several checkboxes: 'Allwrite' (unchecked), 'Clobber' (unchecked), 'Compress' (unchecked), 'Modtime' (unchecked), and 'Rmdir' (checked). The 'Line ending characters for text files' dropdown is set to 'Local: defaults to the current operating system'. The 'On submit' dropdown is set to 'Revert unchanged files'. The 'Check out submitted files after submit' checkbox is unchecked. The 'Automatically get all revisions' checkbox is unchecked. The 'OK' button is highlighted in blue. A red arrow points from the text 'Make sure these match these settings' to the 'Rmdir' checkbox and the 'On submit' dropdown.

Basic Advanced

Owner: keen

☐ Locked: only the owner can edit workspace settings

Description: Created by keen.

Host: keen_mac15

Alt roots:

Make sure these match these settings

☐ Restrict to Server ID:

File Options:

☐ Allwrite: leave all workspace files writeable when getting revisions

☐ Clobber: overwrite writeable workspace files when getting revisions

☐ Compress: speed up slow connections by compressing files when submitting or getting r

☐ Modtime: set file modification times to what they were in the submitter's workspace

☒ Rmdir: delete workspace directories when empty

Line ending characters for text files: Local: defaults to the current operating system

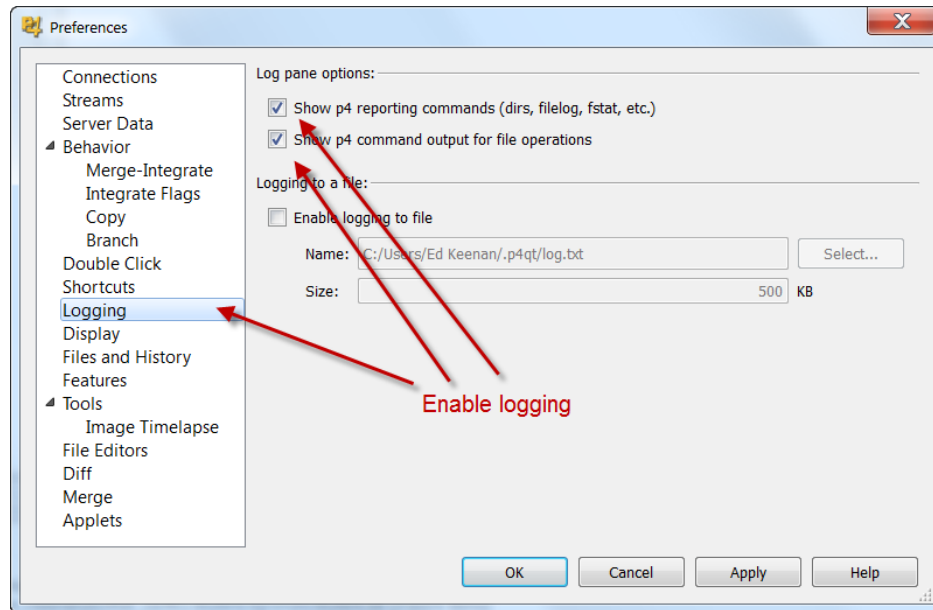
On submit: Revert unchanged files ☐ Check out submitted files after submit

☐ Automatically get all revisions

OK Cancel Apply Help

Perforce(2) - Enable logging

- Go to Edit tab, choose preferences



Step 7/7: Read the perforce papers from the Perforce website (perforce.com).
→ *Seriously, please read them*

Enjoy.

Ed Keenan
ekeen2@cdm.depaul.edu